



NORWEST

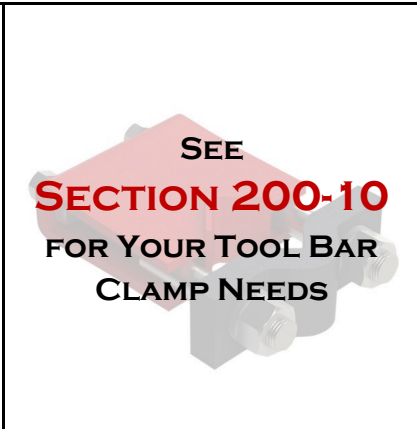
MANUFACTURING

71 SOUTH 215 WEST-RUPERT, ID- PHONE: (208) 436-1770 - FAX: (208) 436-1776

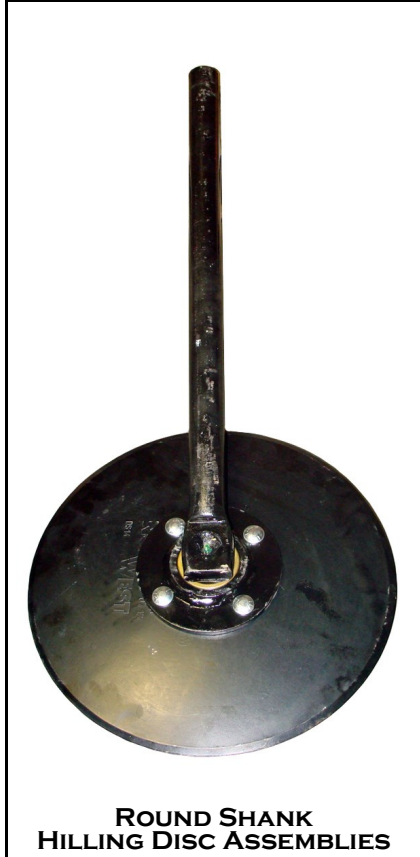
SECTION 200 -80 VINE CUTTING, CULTIVATING & HILLING DISC ASSEMBLIES



SMOOTH BLADE VINE CUTTER



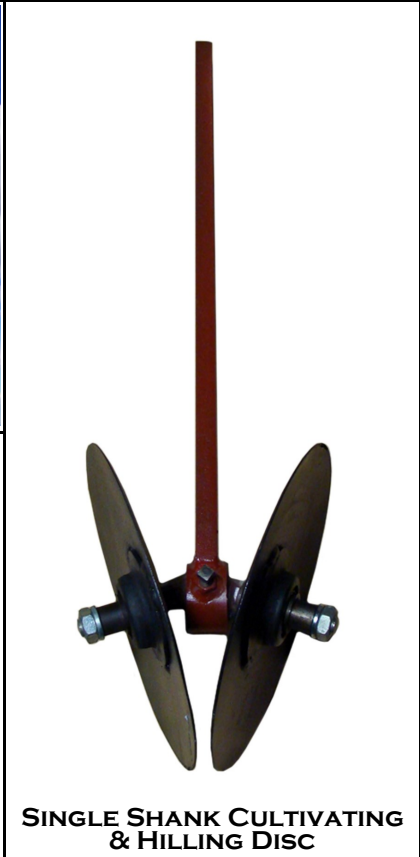
NOTCHED BLADE VINE CUTTER



ROUND SHANK
HILLING DISC ASSEMBLIES



T-SHANK CULTIVATING &
HILLING DISC







SINGLE SHANK CULTIVATING
& HILLING DISC

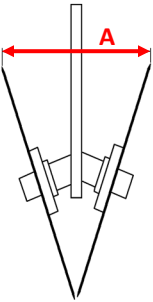
Vine Cutters & Water Furrowers

GDVN-20N



PART	PART #	DESCRIPTION	PART	PART #	DESCRIPTION
	GDVN-20	1" x 3" x 24" Shank with Spindles (GQ-633S). Double 20" Smooth Coulters. V-Cutter with Narrow Back Spacing. Complete with Hubs (GQ-633H).		GDVN-20N	1" x 3" x 24" Shank with Spindles (GQ-633S). Double 20" Notched Coulters. V-Cutter with Narrow Back Spacing. Complete with Hubs (GQ-633H).
PART	PART #	DESCRIPTION	PART	PART #	DESCRIPTION
	GDVS-20	1" x 3" x 24" Shank with Spindles (GQ-633S). Double 20" Smooth <i>Concave</i> . V-Cutter with Standard Back Spacing. Complete with Hubs (GQ-633H).		GDVN-24N	1" x 3" x 36" Shank with Gussets and Spindles (GQ-888S). Double 24" Notched Coulters. V-Cutter with Narrow Back Spacing. Complete with Hubs (GQ-888H).

Backspacing for Row Width

MEAS. (A)	PART #	BACKSPACING
	GDVN-20	13"
	GDVN-20N	13"
	GDVS-20	16"
	GDVN-24N	16"

*(A) Measurement is the spacing measured at the widest point from blade to blade.

NEED DIGGER BLADES?



See **Section 80 - Potato Parts** for your Planting and Harvesting Needs

THESE UNITS ARE USED IN VINE CUTTING, DIKE REMOVAL, and CAN ALSO BE USED AS COVERING DISCS.

GDVN-20 Parts List

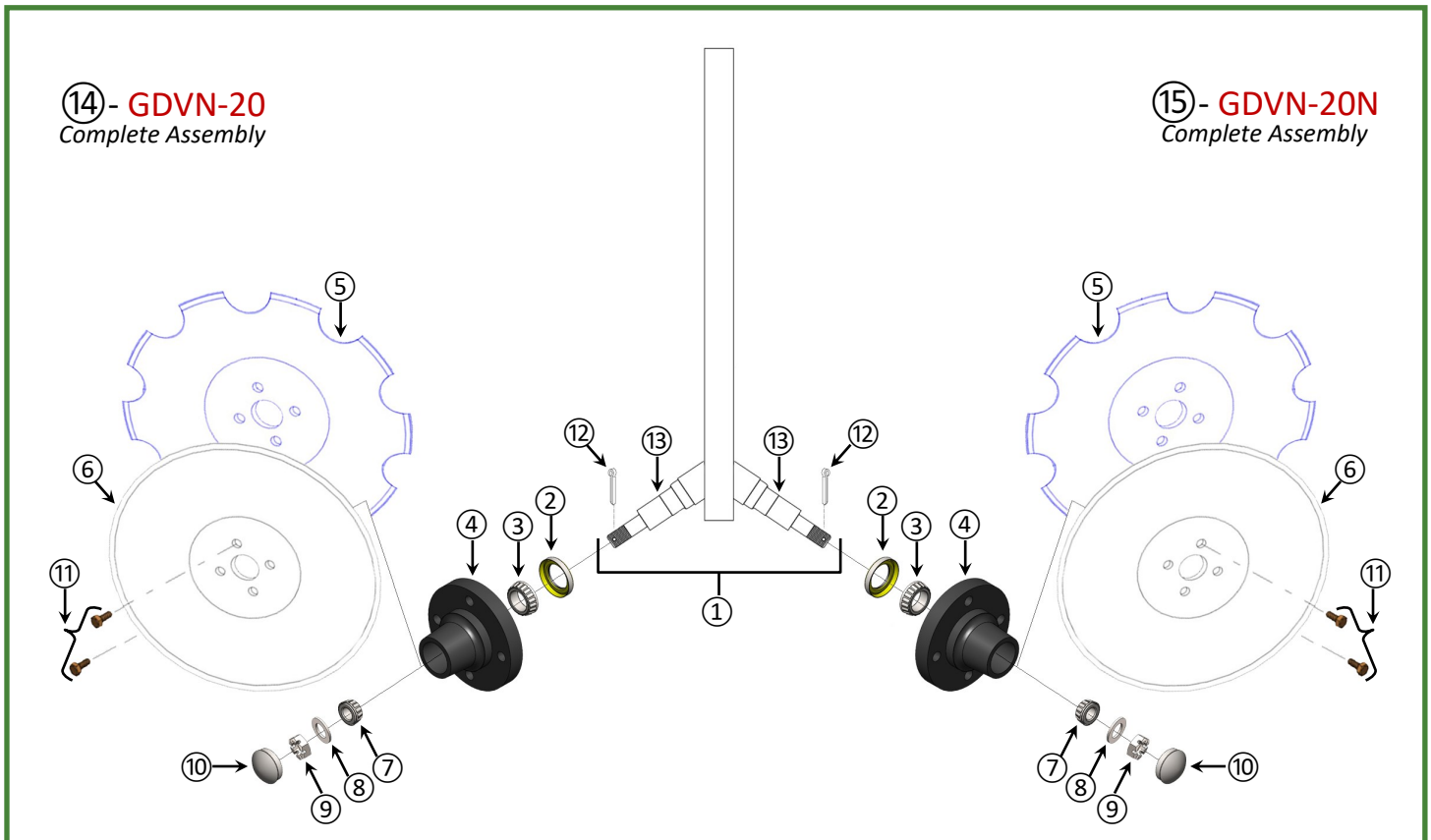
REFERENCE NUMBER	DESCRIPTION	PART NUMBER	REQUIRED PCS.	REFERENCE NUMBER	DESCRIPTION	PART NUMBER	REQUIRED PCS.
①	1" x 3" x 24" Single Shank with (2) GQ-633S Spindles; Less Hubs & Blades	Z-GDVN20	1	⑧	Flat Washer	913608	2
②	Seal	14975	2	⑨	Castle Nut	912954	2
③	Inner Bearing	LM67048	2	⑩	Dust Cap	909911A	2
④	Hub Complete*	GQ-633H	2	⑪	Lug Bolt	943549	8
⑤	N/A			⑫	Cotter Pin	905936	2
⑥	Smooth Flat Coulter Blade: 20"	DSR2060-00	2	⑬	Spindle Complete*	GQ-633S	2
⑦	Outer Bearing	LM11949	2	⑭	Double 20" Smooth Coulter Vine Cutter with Narrow 13" Back Spacing	GDVN-20	--

GDVN-20N Parts List

REFERENCE NUMBER	DESCRIPTION	PART NUMBER	REQUIRED PCS.	REFERENCE NUMBER	DESCRIPTION	PART NUMBER	REQUIRED PCS.
①	1" x 3" x 24" Single Shank with (2) GQ-633S Spindles; Less Hubs & Blades	Z-GDVN20	1	⑧	Flat Washer	913608	2
②	Seal	14975	2	⑨	Castle Nut	912954	2
③	Inner Bearing	LM67048	2	⑩	Dust Cap	909911A	2
④	Hub Complete*	GQ-633H	2	⑪	Lug Bolt	943549	8
⑤	Notched Flat Coulter Blade: 20"	DNR-2050-00	2	⑫	Cotter Pin	905936	2
⑥	N/A			⑬	Spindle Complete*	GQ-633S	2
⑦	Outer Bearing	LM11949	2	⑮	Double 20" Notched Coulter Vine Cutter with Narrow 13" Back Spacing	GDVN-20N	--

*** See Section 200-40 for Hub & Spindle Breakdowns**

Complete part numbers come with leg, spindles, blades, and other associated parts (above).
Legs are made from heavy duty plow steel. ♦ Please Order Clamps Separately ♦

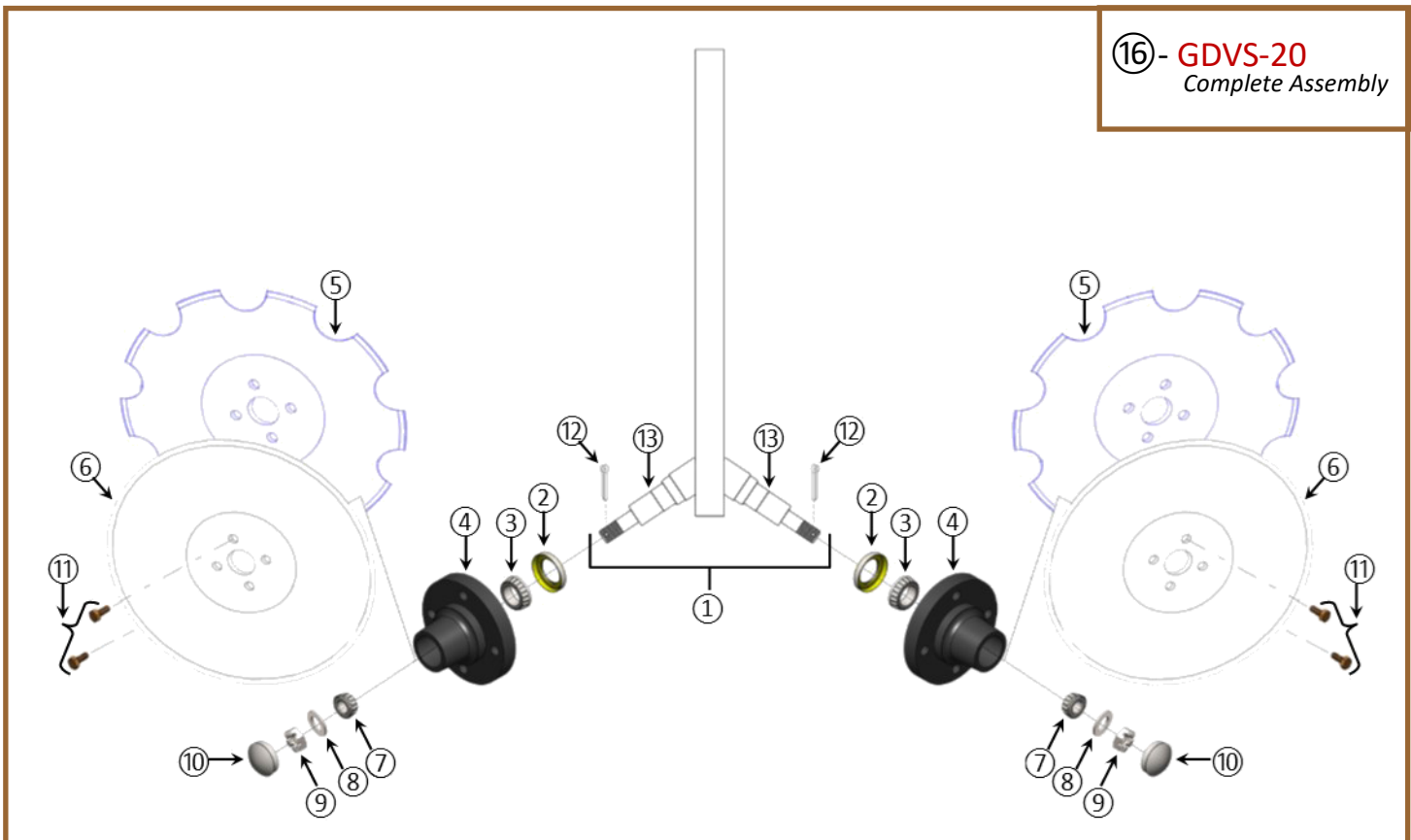


GDVS-20 Parts List

REFERENCE NUMBER	DESCRIPTION	PART NUMBER	REQUIRED PCS.	REFERENCE NUMBER	DESCRIPTION	PART NUMBER	REQUIRED PCS.
①	1" x 3" x 24" Single Shank with (2) GQ-633S Spindles; Less Hubs & Blades	Z-GDVS20	1	⑧	Flat Washer	913608	2
②	Seal	14975	2	⑨	Castle Nut	912954	2
③	Inner Bearing	LM67048	2	⑩	Dust Cap	909911A	2
④	Hub Complete*	GQ-633H	2	⑪	Lug Bolt	943549	8
⑤	N/A			⑫	Cotter Pin	905936	2
⑥	Non-Raised Flat Center Concave Disc w/ 633 Hub Pattern; 20"	DSFF2060-633	2	⑬	Spindle Complete*	GQ-633S	2
⑦	Outer Bearing	LM11949	2	⑯	Double 20" Smooth Concave Vine Cutter with Narrow 13" Back Spacing	GDVS-20	--

*** See Section 200-40 for Hub & Spindle Breakdowns**

Complete part numbers come with leg, spindles, blades, and other associated parts (above).
Legs are made from heavy duty plow steel. ♦ Please Order Clamps Separately ♦



MEAS. (A)	Backspacing for Row Width	
	PART #	BACKSPACING
	GDVS-20	16"
	GDVN-24N	16"

*(A) Measurement is the spacing measured at the widest point from blade to blade.

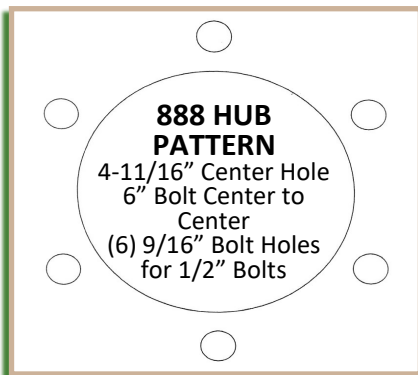
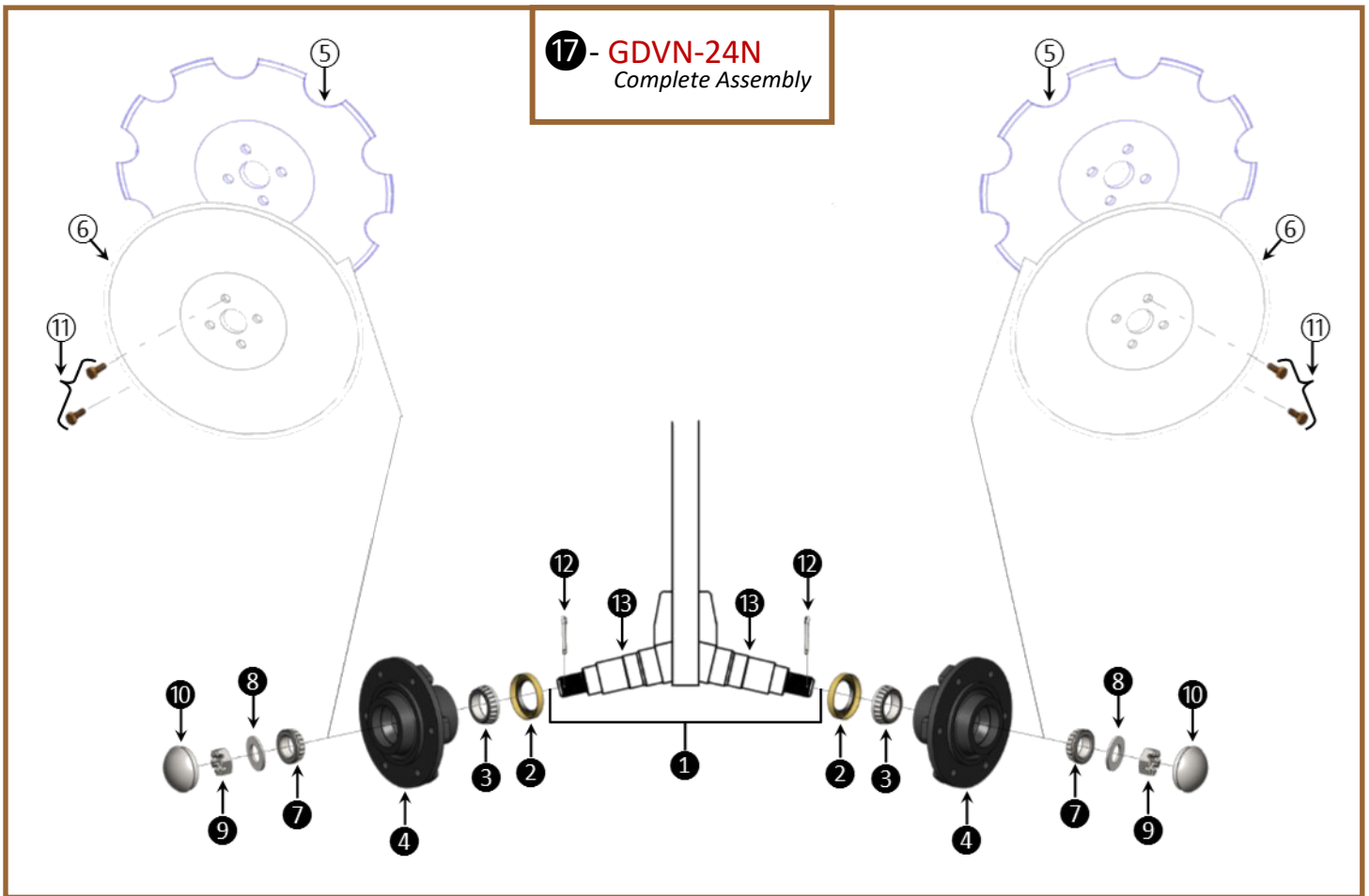


GDVN-24N Parts List



REFERENCE NUMBER	DESCRIPTION	PART NUMBER	REQUIRED PCS.	REFERENCE NUMBER	DESCRIPTION	PART NUMBER	REQUIRED PCS.
①	1" x 3" x 36" Single Shank w/ Gussets & (2) GQ-888S Spindles; Less Hubs & Blades	Z-GDVN24N	1	⑧	Flat Washer	913683	2
②	Seal	16289	2	⑨	Castle Nut	912952	2
③	Inner Bearing	JL69349	2	⑩	Dust Cap	909905	2
④	Hub Complete*	GQ-888H	2	⑪	Lug Bolt	943549	12
⑤	Notched Flat Coulter Blade: 24"	DNR2480-00	2	⑫	Cotter Pin	905936	2
⑥	N/A			⑬	Spindle Complete*	GQ-888S	2
⑦	Outer Bearing	LM67048	2	⑰	Double 24" Notched Coulter Vine Cutter with Narrow 13" Back Spacing	GDVN-24N	--

*** See Section 200-40 for Hub & Spindle Breakdowns**

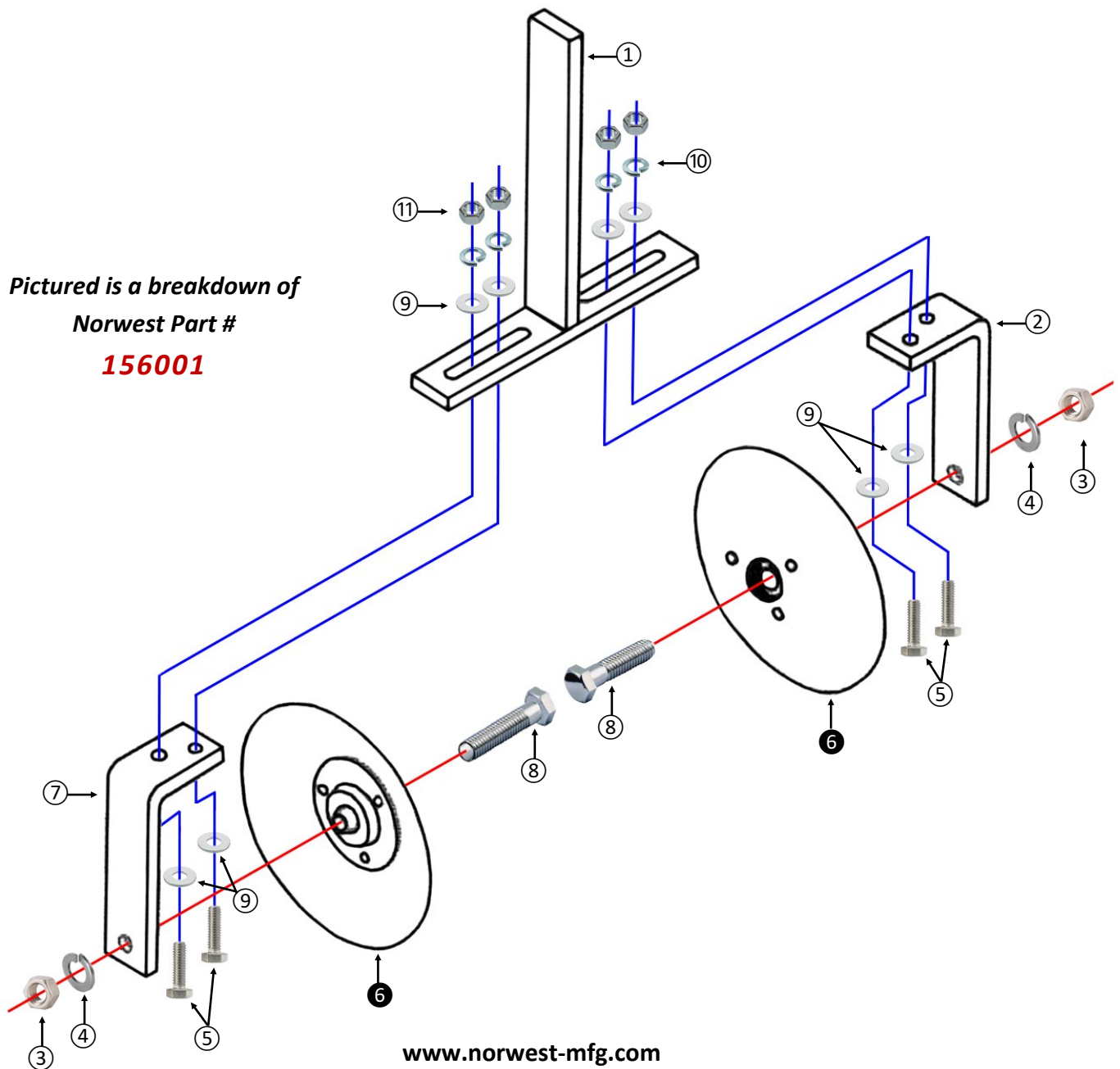
Complete part numbers come with leg, spindles, blades, and other associated parts (above).
Legs are made from heavy duty plow steel. ♦ Please Order Clamps Separately ♦



Cultivating Disc Assemblies

PART	PART NUMBER	DESCRIPTION	WEIGHT	PART	PART NUMBER	DESCRIPTION	WEIGHT
	156001	T-Shank Cultivating Disc Assembly (5/8" x 2" x 12" Shank)	18.50 LBS.		156010	Single Shank Cultivating Disc Assembly (5/8" x 2" x 21" Shank)	15.50 LBS.
<p>Farmers find the Norwest T-Shank Disc Assembly ideal for cultivating or hilling a variety of crops. The 10" double discs have lateral adjustment that makes it possible to set the discs closed in front to cut away close to the plant, or open in front to hill.</p>				<p>The Single Shank Disc Assembly has two 10" discs mounted on a "V" shaped spindle which has an angle adjustment making this application a perfect cultivating or hilling disc.</p>			

Pictured is a breakdown of
Norwest Part #
156001



www.norwest-mfg.com


Reference Number	Description	Norwest Part Number	Required Pcs.
①	T-Shank Weld Assembly	Z-156510	1
②	Right T-Shank Bracket	Z-156017	1
③	5/8" Hex Nut	FHN58	2
④	5/8" Lock Washer	FLW58	2
⑤	7/16" x 1-3/4" Hex Bolt. Grade 5	FHB76175G5	4
⑥	10" Disc Assembly Complete with Bearing, Sleeve, Bearing Retainer & Fasteners (See Breakdown Below)	156039	2
⑦	Left T-Shank Bracket	Z-156018	1
⑧	5/8" x 3" Hex Bolt. Grade 5	FHB58300G5	2
⑨	7/16" Flat Washer	FFW76	8
⑩	7/16" Lock Washer	FLW76	4
⑪	7/16" Hex Nut	FHN76	4

DISC BLADE ASSEMBLY

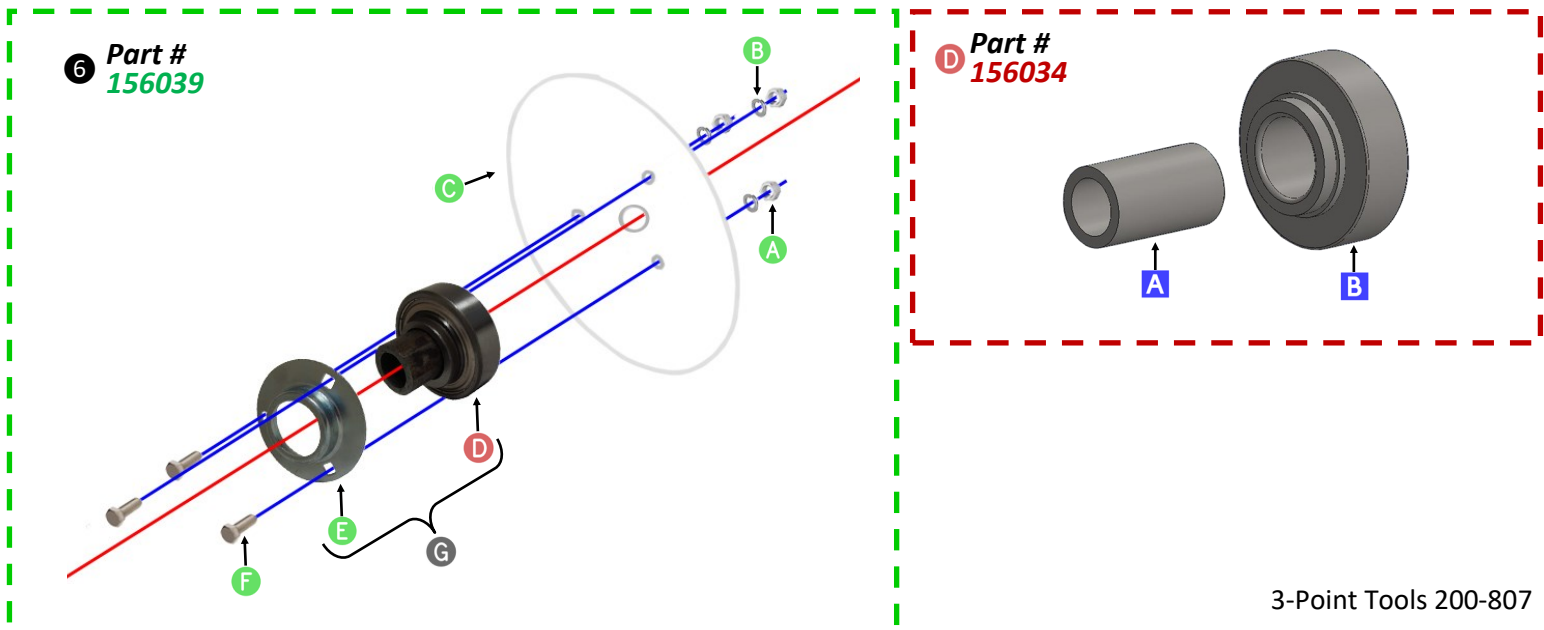
⑥	10" Disc Assembly Complete with Bearing, Sleeve, Bearing Retainer & Fasteners
---	---

SUB PARTS for Norwest Part # 156039 	Reference	Description	Norwest Part #	Required Pcs.
	A	5/16" Hex Nut	FHN56	6
	B	5/16" Lock Washer	FLW56	6
	C	Bellota 10" x 2.5mm Smooth Blade (Blade Only)	DS1025-ACME	2
	D	Disc Assembly Bearing with 5/8" Sleeve	156034	2
	E	Bearing Retainer	156557	2
	F	5/16" x 3/4" Hex Bolt. Grade 5	FHB5675G5	6
	G	Bearing/Retainer Assembly (Bearing, Sleeve, Bearing Retainer Only)	156033	2



BEARING ASSEMBLY

SUB PARTS for Norwest Part # 156034 	Reference	Description	Norwest Part #	Required Pcs.
	A	5/8" Sleeve for Bearing Assembly	156025	2
	B	205 Series Bearing 7/8"	FHR205-14/2	2

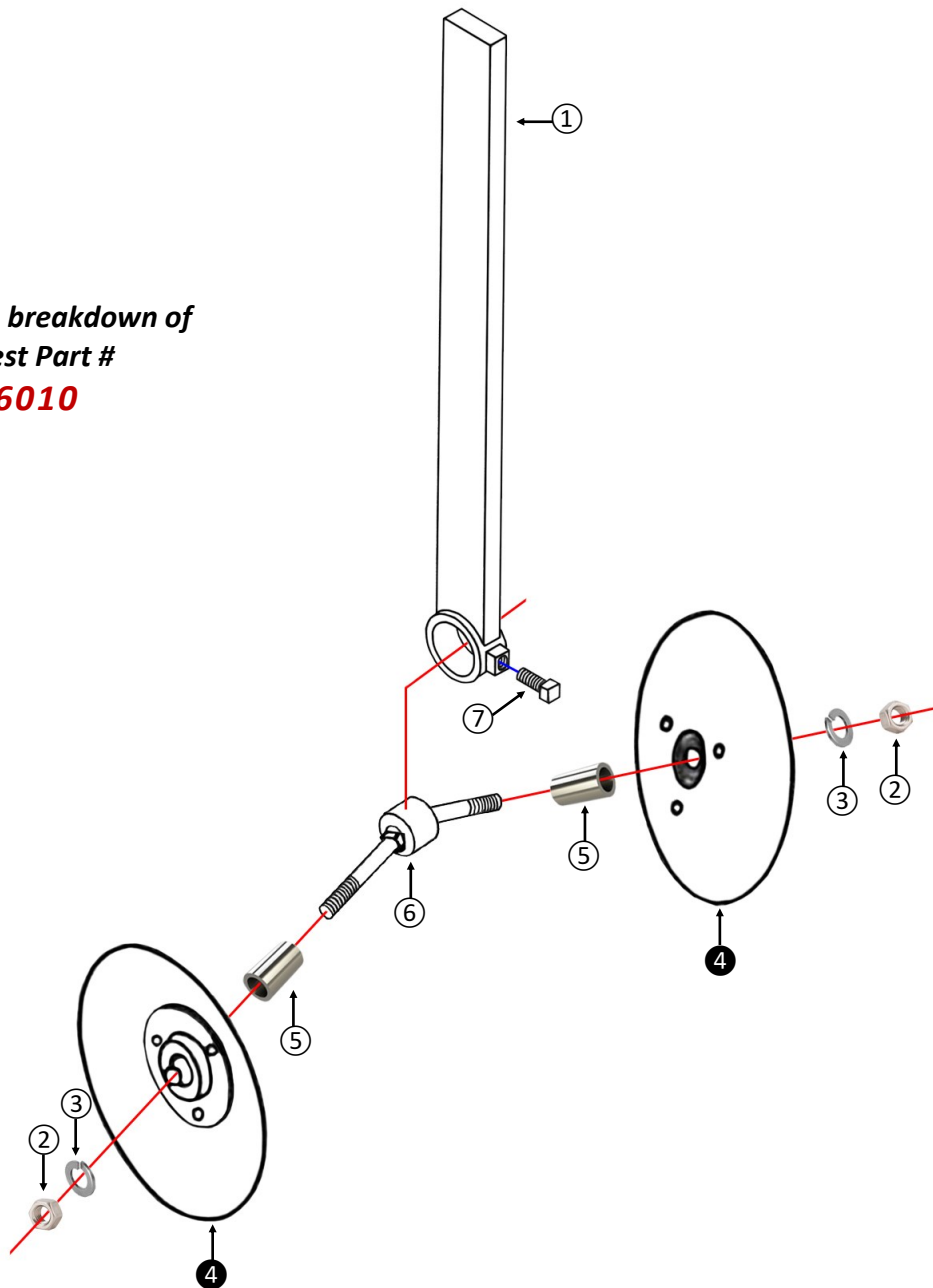
156001 BREAKDOWN ON PAGE 200-806



Cultivating Disc Assemblies

PART	PART NUMBER	DESCRIPTION	WEIGHT	PART	PART NUMBER	DESCRIPTION	WEIGHT
	156001	T-Shank Cultivating Disc Assembly (5/8" x 2" x 12" Shank)	18.50 LBS.		156010	Single Shank Cultivating Disc Assembly (5/8" x 2" x 21" Shank)	15.50 LBS.
<p>Farmers find the Norwest T-Shank Disc Assembly ideal for cultivating or hilling a variety of crops. The 10" double discs have lateral adjustment that makes it possible to set the discs closed in front to cut away close to the plant, or open in front to hill.</p>				<p>The Single Shank Disc Assembly has two 10" discs mounted on a "V" shaped spindle which has an angle adjustment making this application a perfect cultivating or hilling disc.</p>			

Pictured is a breakdown of
Norwest Part #
156010

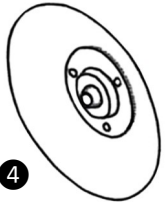


Reference Number	Description	Norwest Part Number	Required Pcs.
①	Single Shank Weld Assembly	156020	1
②	5/8" Hex Nut	FHN58	2
③	5/8" Lock Washer	FLW58	2
④	10" Disc Assembly Complete with Bearing, Sleeve, Bearing Retainer & Fasteners (See Breakdown Below)	156039	2
⑤	3/4" Spacer	156048	2
⑥	Dual Spindle for Single Shank Assembly	156026	1
⑦	7/16" x 1" Set Screw	FSHSS76100	1

DISC BLADE ASSEMBLY

④ 10" Disc Assembly Complete with Bearing, Sleeve, Bearing Retainer & Fasteners

SUB PARTS for Norwest Part # 156039



Reference	Description	Norwest Part #	Required Pcs.
A	5/16" Hex Nut	FHN56	6
B	5/16" Lock Washer	FLW56	6
C	Bellota 10" x 2.5mm Smooth Blade (Blade Only)	DS1025-ACME	2
D	Disc Assembly Bearing with 5/8" Sleeve	156034	2
E	Bearing Retainer	156557	2
F	5/16" x 3/4" Hex Bolt. Grade 5	FHB5675G5	6
G	Bearing/Retainer Assembly (Bearing, Sleeve, Bearing Retainer Only)	156033	2

BEARING ASSEMBLY

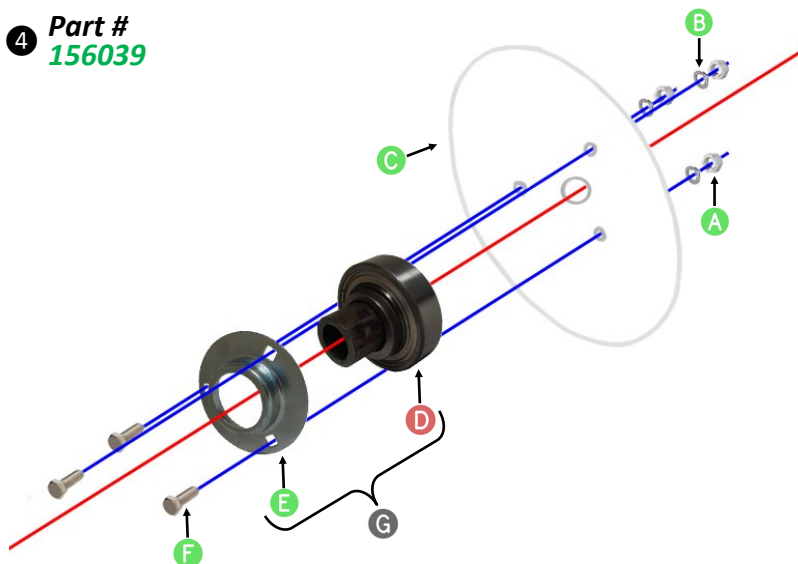
SUB PARTS for Norwest Part # 156034



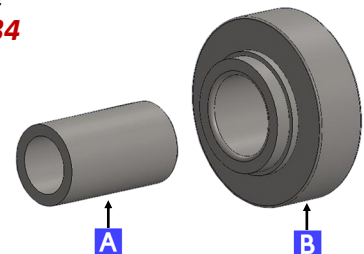
Reference	Description	Norwest Part #	Required Pcs.
D Bearing Assembly with 5/8" Sleeve			
A	5/8" Sleeve for Bearing Assembly	156025	2
B	205 Series Bearing 7/8"	FHR205-14/2	2

156001 BREAKDOWN ON PAGE 200-806

④ Part # 156039



④ Part # 156034



HILLING DISC ASSEMBLIES

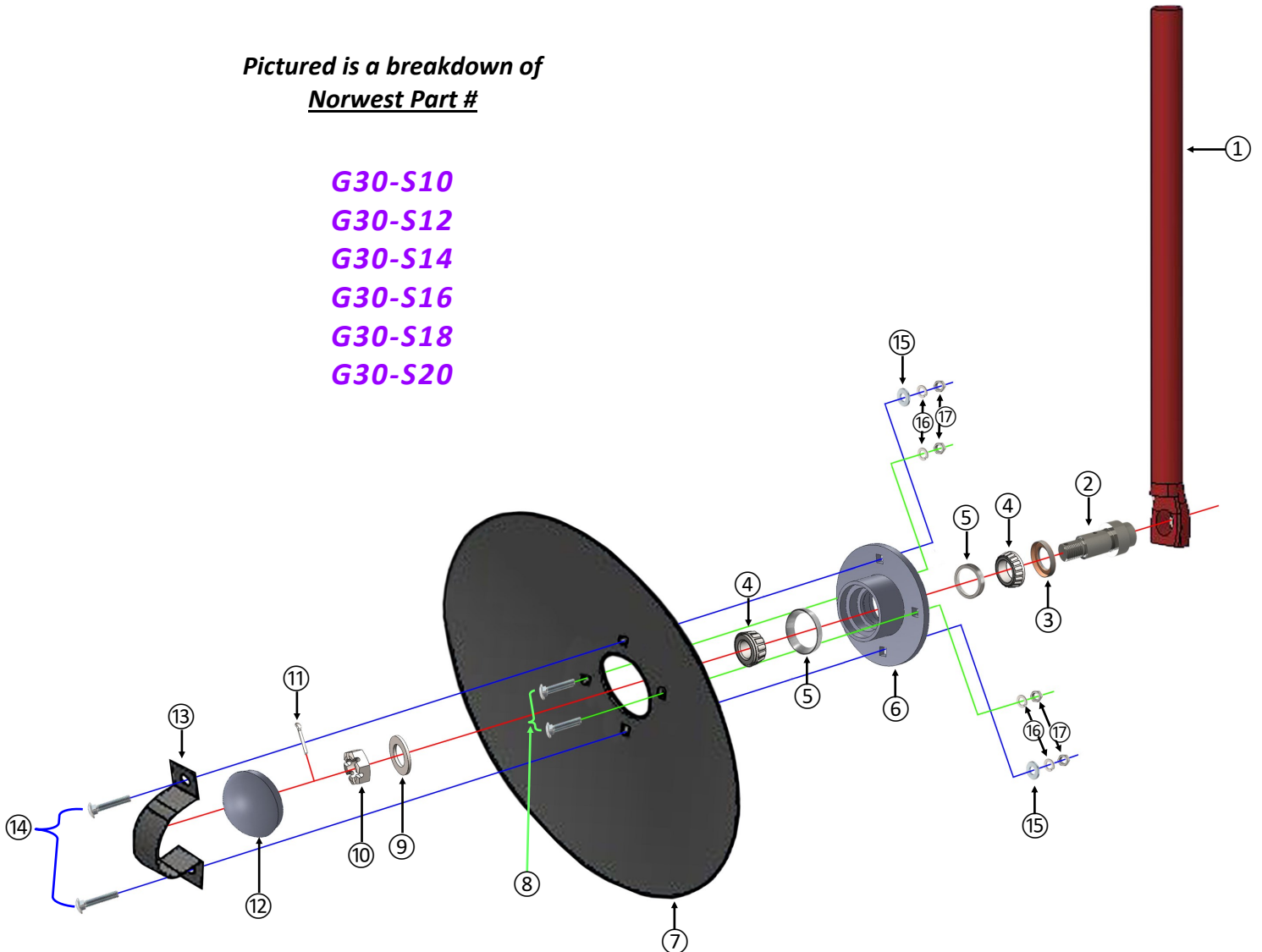


PART NUMBER	DESCRIPTION	APPROX. WEIGHT
G30-S10	Norwest 1-3/8" Round Shank w/ 10" Smooth Disc	
G30-S12	Norwest 1-3/8" Round Shank w/ 12" Smooth Disc	16.68 LBS.
G30-S14	Norwest 1-3/8" Round Shank w/ 14" Smooth Disc	18.25 LBS.
G30-S16	Norwest 1-3/8" Round Shank w/ 16" Smooth Disc	20.40 LBS.
G30-S18	Norwest 1-3/8" Round Shank w/ 18" Smooth Disc	26.25 LBS.
G30-S20	Norwest 1-3/8" Round Shank w/ 20" Smooth Disc	

NOT ALL ITEMS IN STOCK: PLEASE CALL FOR AVAILABILITY

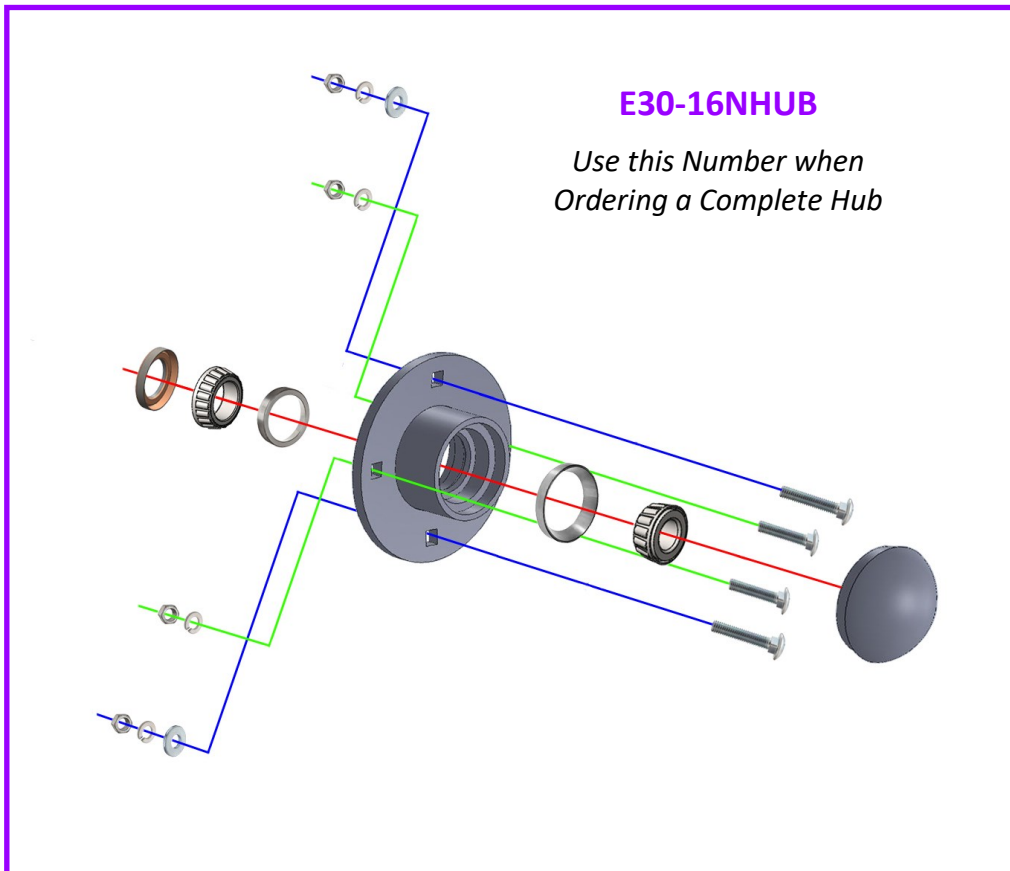
*Pictured is a breakdown of
Norwest Part #*

- G30-S10**
- G30-S12**
- G30-S14**
- G30-S16**
- G30-S18**
- G30-S20**



Reference Number	Description	Norwest Part Number	Required Pcs.
①	1-3/8" x 24-1/4" Straight Round Hiller Shank with 3/4" Hole	Z-2183-3153427	1
②	Norwest Disc Spindle with Grease Hole; 90°	E30-16NSP	1
③	Triple Lip Seal	NW40-3	1
④	Inner/Outer Bearing	L44643	2
⑤	Tapered Bearing Race (Inner/Outer)	L44610/2	2
⑥	Hub Casting Less Races for E30-16NHUB	Z-E30-16NH	1
⑦	Smooth Disc Blade ▪ 12" x 3.0mm	DSX1230-00	1
	Smooth Disc Blade ▪ 14" x 3.5mm	DSX1435-00	
	Smooth Disc Blade ▪ 16" x 3.5mm	DSX1635-00	
	Smooth Disc Blade ▪ 18" x 4.5mm	DSX1845-00	
⑧	3/8" x 1" Carriage Bolt, Grade 5	FCB38100G5	2
⑨	Flat Washer for E30 Spindle	913608	1
⑩	Castle Nut	912954	1
⑪	Cotter Pin	905936	1
⑫	Dust Cap	909905	1
⑬	Dust Cover Strap	E30-16N STRAP	1
⑭	3/8" x 1-1/4" Carriage Bolt, Grade 5 (for use with the Dust Cover Strap)	FCB38125G5	2
⑮	3/8" Flat Washer (for use with the Dust Cover Strap)	FFW38	2
⑯	3/8" Lock Washer	FLW38	4
⑰	3/8" Hex Nut	FHN38	4

G30-12S, G30-14S, G30-16S & G30-18S BREAKDOWN ON PAGE 200-810



E30-16NHUB

Norwest Double Disc **Hub Complete** with Triple Lip Seal, Dust Cap, Bearings, Races, Bolts, Washers & Nuts

See Diagram on Previous Page for Reference Numbers.
See Table Above for Part Numbers

Hilling Wing Assembly

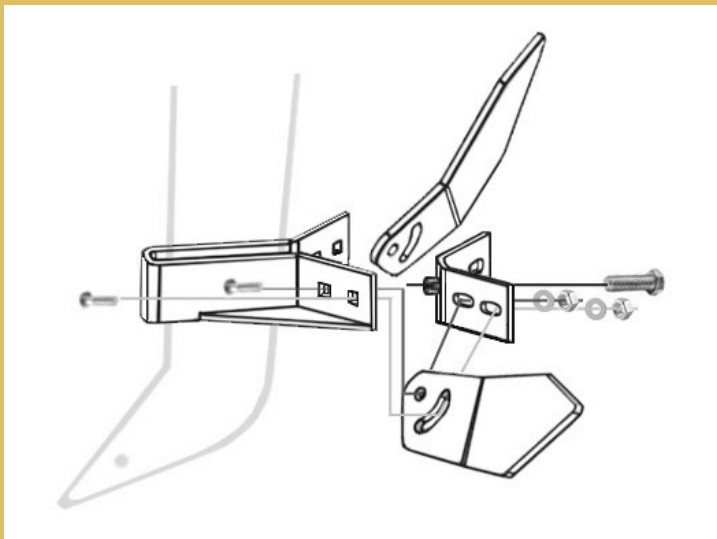
- Available in 2 sizes
- Fits most diker style machines
- Commonly used for Potato applications, but will work for other row crops
- Wings easily adjustable for hill size preferences. (Widths from 16" to 28")



Norwest Part #



Norwest Part #



Hilling Wing Assembly Sub Parts for **B-2800 & B-2800L**

PART	NORWEST PART NUMBER	DESCRIPTION
	Z-B-2830	Right Hand Wing for B-2800 & B-2800L Hilling Wing Assemblies
	Z-B-2831	Left Hand Wing for B-2800 & B-2800L Hilling Wing Assemblies
For B-2800 Assembly Only		
	Z-B-2810	Front Strap
	Z-B-2840	Rear Strap
For B-2800L Assembly Only		
	Z-B-2810L	Front Strap
	Z-B-2840L	Rear Strap

71 South 215 West • Rupert, Idaho 83350
Phone: (208)436-1770 • Fax: (208)436-1776